



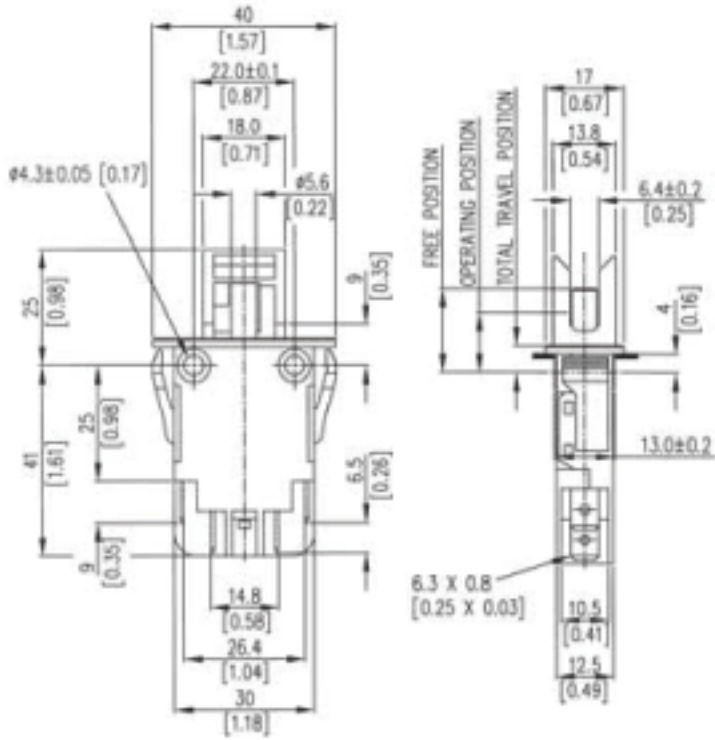
XT

Type	<ul style="list-style-type: none"> • Switches
Product type	<ul style="list-style-type: none"> • Burgess Double Break Momentary Switch
Typical markets	<ul style="list-style-type: none"> • business machines • leisure & fitness • building automation & security • industrial equipment & automation • distribution
Typical applications	<ul style="list-style-type: none"> • vending machines • gaming machines • copiers • printers • industry general • local catalog distributors
Dimensions	<ul style="list-style-type: none"> • 30 x 32 x 12 mm
Characteristics	<ul style="list-style-type: none"> • 8 mm contact gap, creepage and clearance distances • double break contacts
Rating	<ul style="list-style-type: none"> • 400 VAC, 16.5 A max.
Actuators	<ul style="list-style-type: none"> • shrouded plunger • optional key • plain plunger

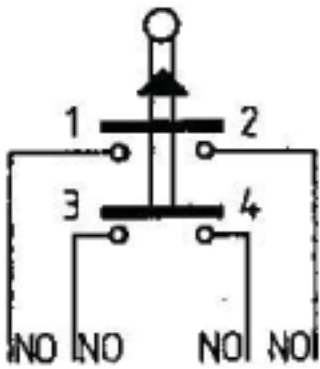


- Approvals/Quality**
- ENEC
 - UL
 - cUL
 - CSA

Dimensions



Circuits



Performance

Preferred range

Partnumber	Terminal	Actuator	Electrical rating @

			ENEC	UL/CSA
<u>XTD22PZ1</u>	faston 6.3 x 0.8 mm	plunger	400 VAC 16.5 A	250 VAC 15.5 A
<u>XTD22AZ1</u>	faston 6.3 x 0.8 mm	shrouded plunger	400 VAC 16.5 A	250 VAC 15.5 A





XTD22AZ1

Dimensions	30 mm
Dimensions	32 mm
Dimensions	12 mm
Terminal	faston 6.3 x 0.8 mm
Circuit	NO
Protection	IP40
Actuator	shrouded plunger
Contacts	AgNi
Electrical rating ENEC	400 VAC
Electrical rating UL/CSA	250 VAC
Actuating force	3.8 Nm
Release force	5.8 N
Free position (FP)	18 mm
Operating position (OP)	13 mm
Total travel position (TP)	10 mm
Overtravel	3 mm